

AsiaWorld-Expo

Looking into the future of MICE industries
in Hong Kong and the region



AsiaWorld-Expo

- Opened in **December 2005**
- Wholly owned by **Airport Authority Hong Kong** since April 2022
- Over **70,000 square metres** of rentable spaces





Destination of 2025 UFI Global Congress

With the first-ever activations throughout the Greater Bay Area

The Centric Point of the Greater Bay Area

An emerging integrated economic business hub in southern China



Guangzhou

Shenzhen

Macau

Dongguan

Foshan

Hong Kong

Jiangmen

Huizhou

Zhaoqing

Zhongshan

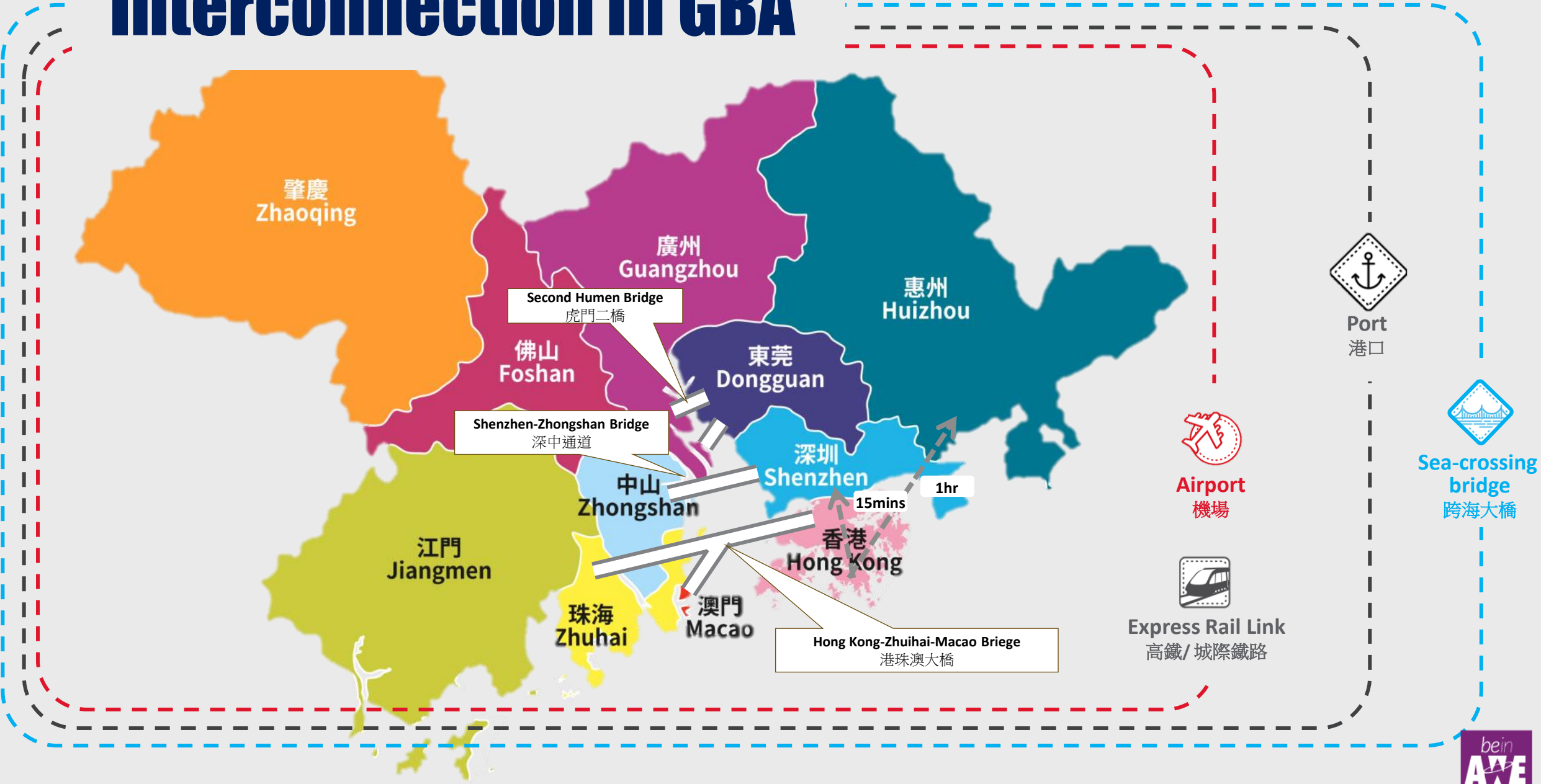
Zhuhai

← 2 Special Administrative Regions + 9 Cities →

The Greater Bay Area (GBA)



Interconnection in GBA





**Gateway to
Greater Bay Area**

**86 million+
Population**

Greater Bay Area will be the Growth Engine of China and the World

Upcoming Economic Power House

Greater Bay Area

| | |
|------------|--------------------|
| GDP (USD) | 1,958.14 billion |
| Population | Over 86.62 million |
| Size | Over 56,098 sq. km |



San Francisco Bay Area

| | |
|------------|------------------|
| GDP(USD) | 1,217.19 billion |
| Population | 7.52 million |
| Size | 17,887 sq.km |

New York Bay Area

| | |
|------------|------------------|
| GDP(USD) | 1,902.08 billion |
| Population | 19.62 million |
| Size | 17,312 sq.km |

Tokyo Bay Area

| | |
|------------|------------------|
| GDP(USD) | 2,094.04 billion |
| Population | 44.35 million |
| Size | 36,898 sq.km |

Source: Government statistical departments in the relevant jurisdictions, HKTDC

Tremendous Business Potential



Close tie with
10,000+
Mainland China's
Associations

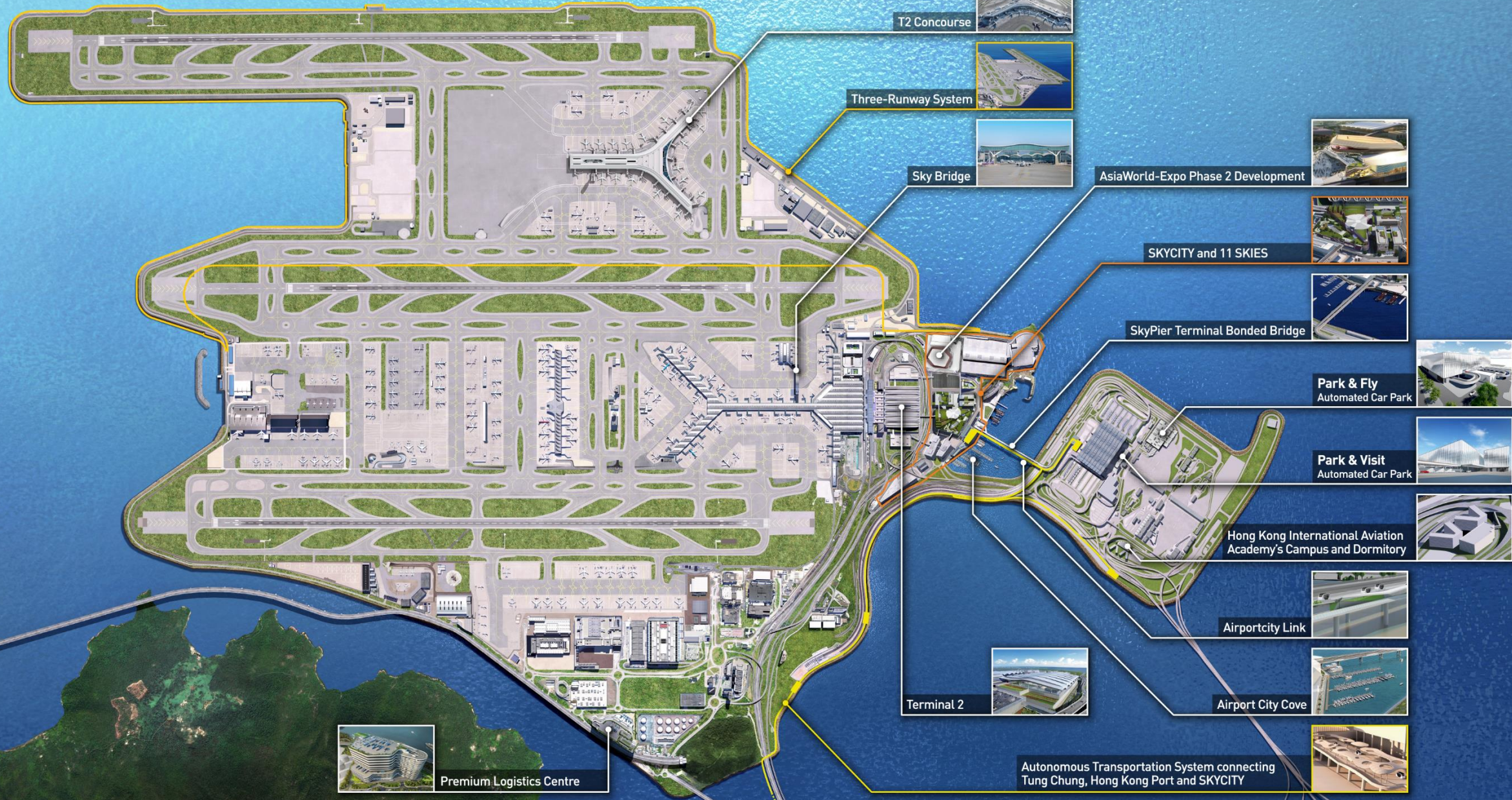


1/5
High-Net-Worth
Households



Thousands of
MNCs & Unicorns

The Airport City



Airport City – GBA Icon

Hong Kong
International Airport

SKYCITY

Hong Kong-Zhuhai-Macao Bridge
Hong Kong Boundary Crossing
Facilities (HKBCF) Island

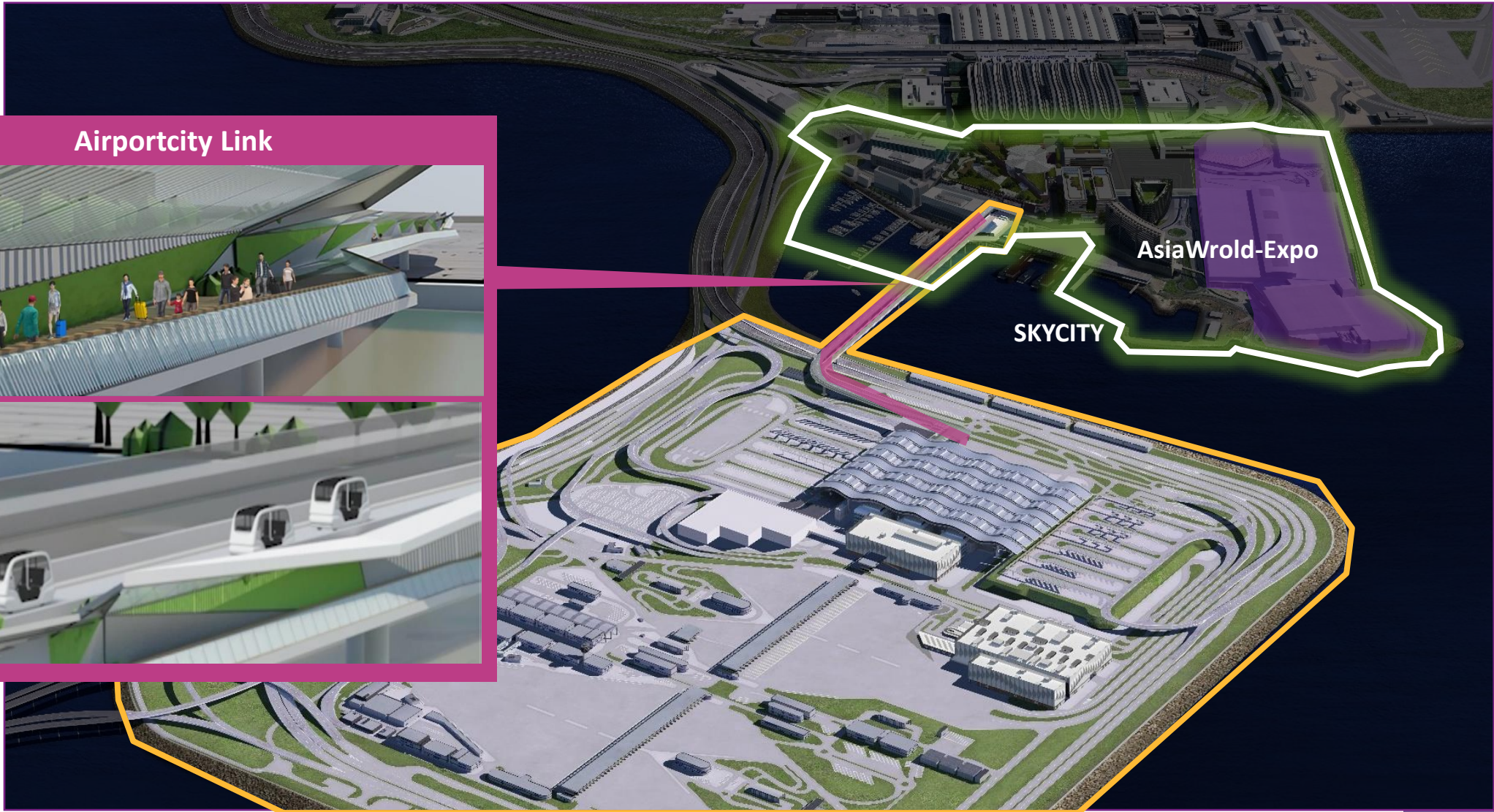
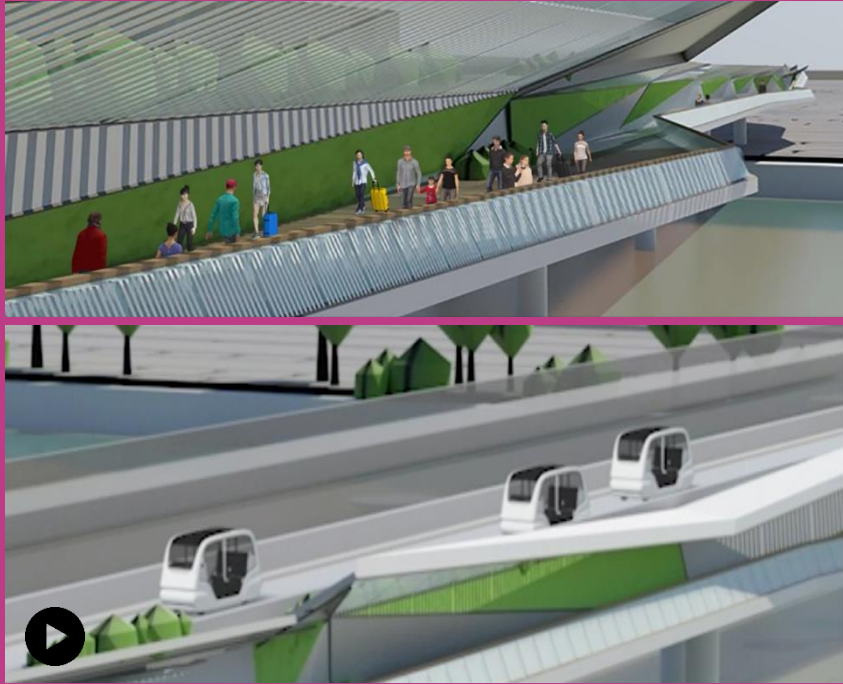
Boundary Crossing Facilities (HKBCF)

Hong Kong-Zhuhai-Macao Bridge
Hong Kong Boundary Crossing
Facilities (HKBCF) Island



Airportcity Link

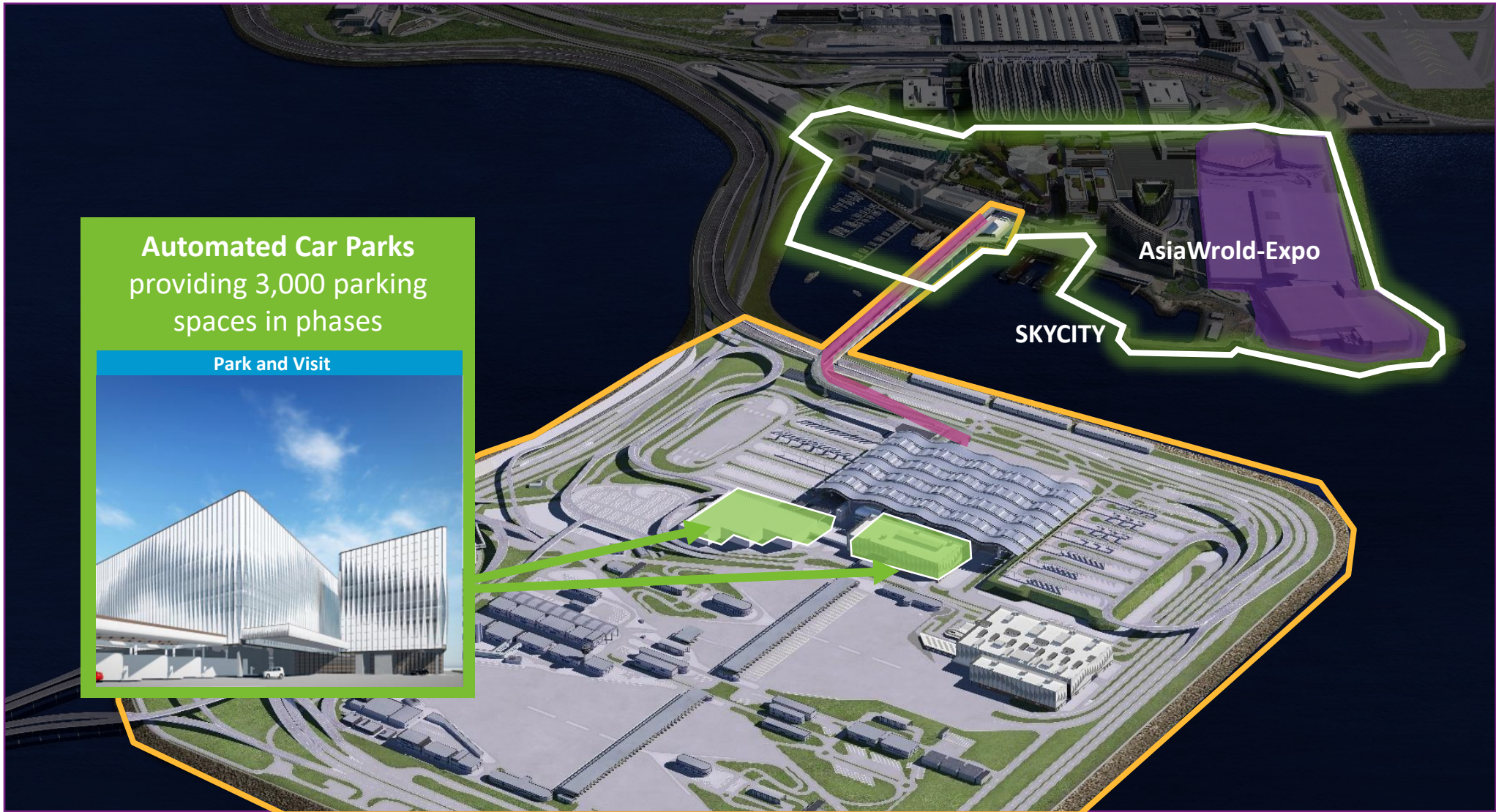
Airportcity Link



Automated Car Parks

Automated Car Parks
providing 3,000 parking
spaces in phases

Park and Visit



Premium Services for Premium MICE Travellers



Commercial VIP Lounge



Check-in Anywhere



Meet and Greet Service at Airport



Fast Track Channel Service

SKYCITY



AsiaWorld-Expo
Phase II

AsiaWorld-Expo
Phase I

11 SKIES

Regala Skycity Hotel

SkyCity Marriott Hotel

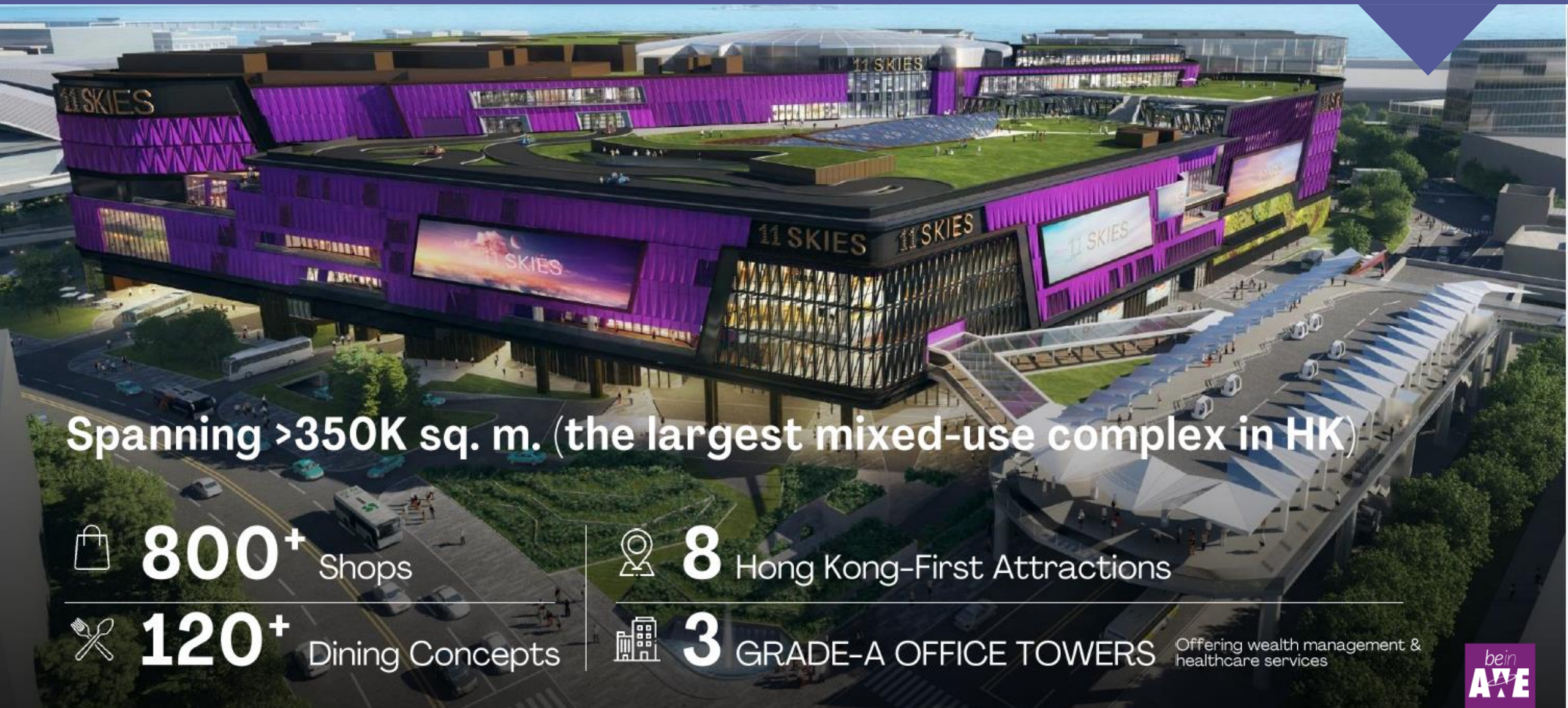
SkyPier Terminal

Hong Kong's Largest Tourism Landmark

A MUST-VISIT for ALL:
Ultimate Retailtainment
Destination in Hong Kong

A FUTURE GATEWAY:
Hub for all GBA and
International Tourists

11 SKIES – A brand new tourism landmark



Spanning >350K sq. m. (the largest mixed-use complex in HK)



800+

Shops



8

Hong Kong-First Attractions



120+

Dining Concepts

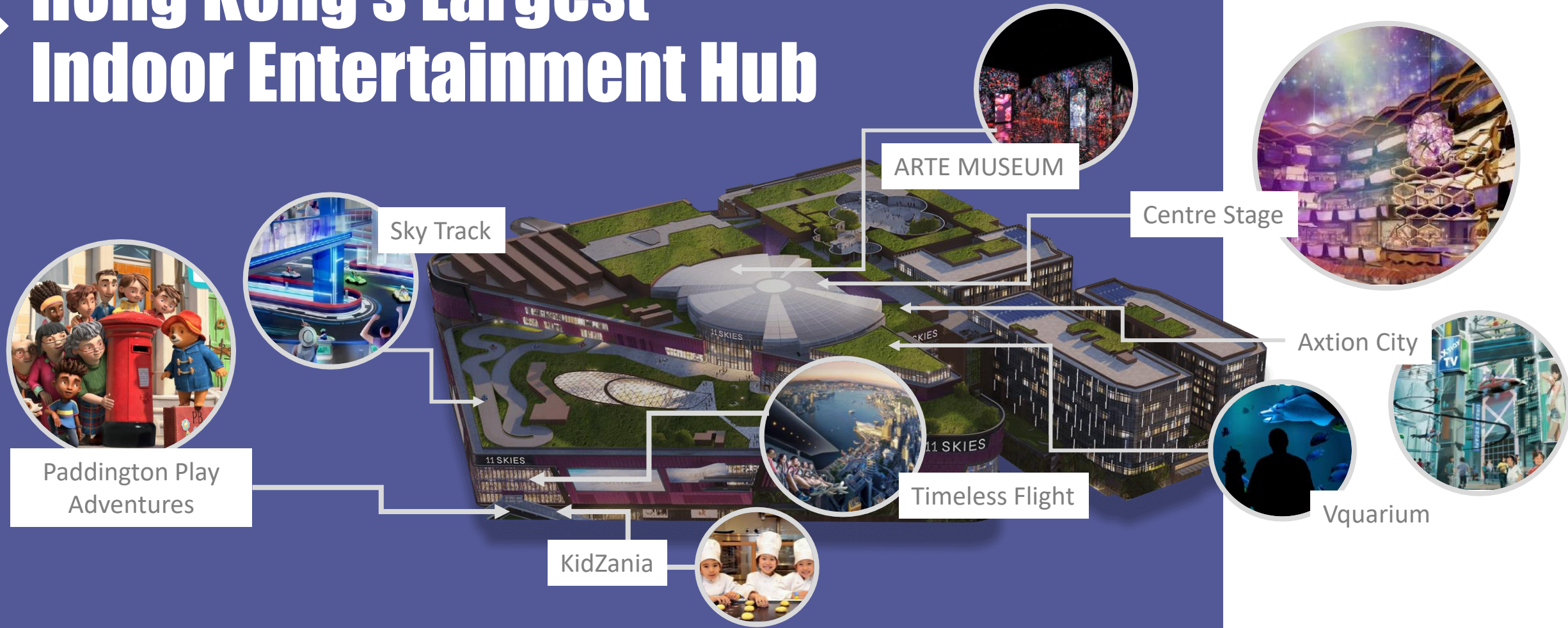


3

GRADE-A OFFICE TOWERS

Offering wealth management & healthcare services

Hong Kong's Largest Indoor Entertainment Hub



Opening by phases from 2022-2025

2022

K11 ATELIER 11 SKIES
Opening

2023

SKYCITY
Transport Terminal
Opening

2024

Entertainment
Trail Run

2025

11 SKIES
Grand Opening

New Hotels Around AWE

Tung Chung
(10 mins driving distance from AWE)

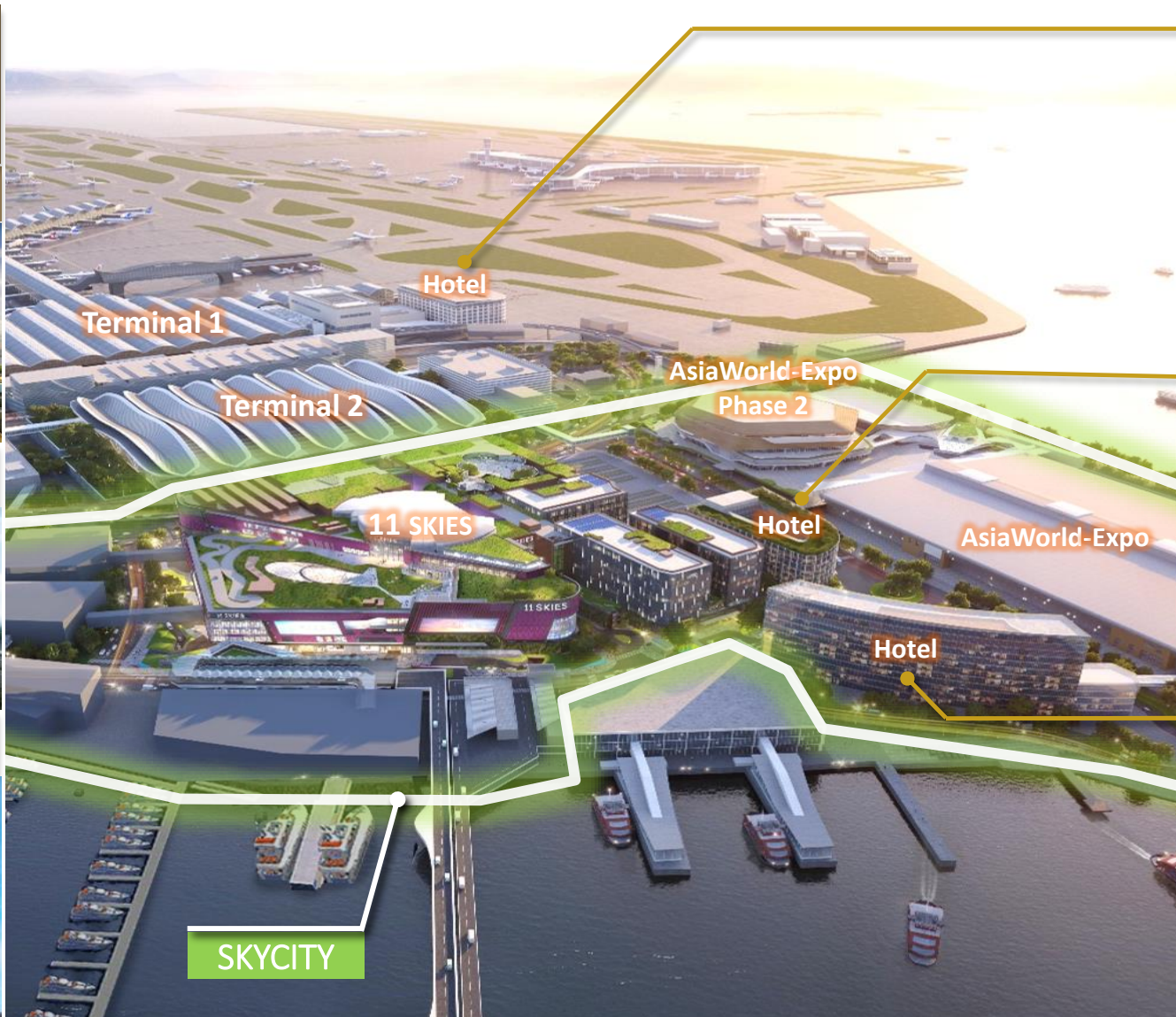
Novotel Hong Kong Citygate



The Silveri Hong Kong - MGallery



Sheraton and Four Points by Sheraton Hong Kong



Regal Airport Hotel



- Located next to AsiaWorld-Exp
- Over 600 guest rooms

Regala Skycity Hotel



- Footbridge directly linked to 11 SKIES and AsiaWorld-Expo
- Over 1200 guest rooms and suites

SkyCity Marriott Hotel



- Footbridge directly linked to Terminal 1
- Over 1100 guest rooms and suites

An aerial rendering of a large-scale infrastructure project, likely an airport and exhibition center. The image shows a complex network of runways, taxiways, and terminal buildings. A prominent feature is a large, modern exhibition center with a distinctive roof structure, highlighted by a purple outline. The entire complex is situated on a peninsula or island, with a long bridge extending from the mainland. The background shows a body of water and green hills.

Leading MICE and Entertainment Hub

AsiaWorld-Expo

Facilities Transformation

Renovation Project Invested More Than HK\$1billion



New Retractable Seat-Riser
saving move-in/ out time



New look of facilities with upgraded AV system, LED and 5G network



Venue-wide face-lifting



Convertible washrooms
enhancing visitor experience



Award-winning restaurants
offering various dining options



Replacement of Water-cooled chillers
reducing >3840tCO2e = planting of >167,000trees



AsiaWorld-Expo Phase II

20,000 seat capacity

Adding another 30,000sqm, making total floor area to 100,000sqm

Incentive Scheme for Recurrent Exhibitions

For recurrent events held at AWE by 30 June 2026

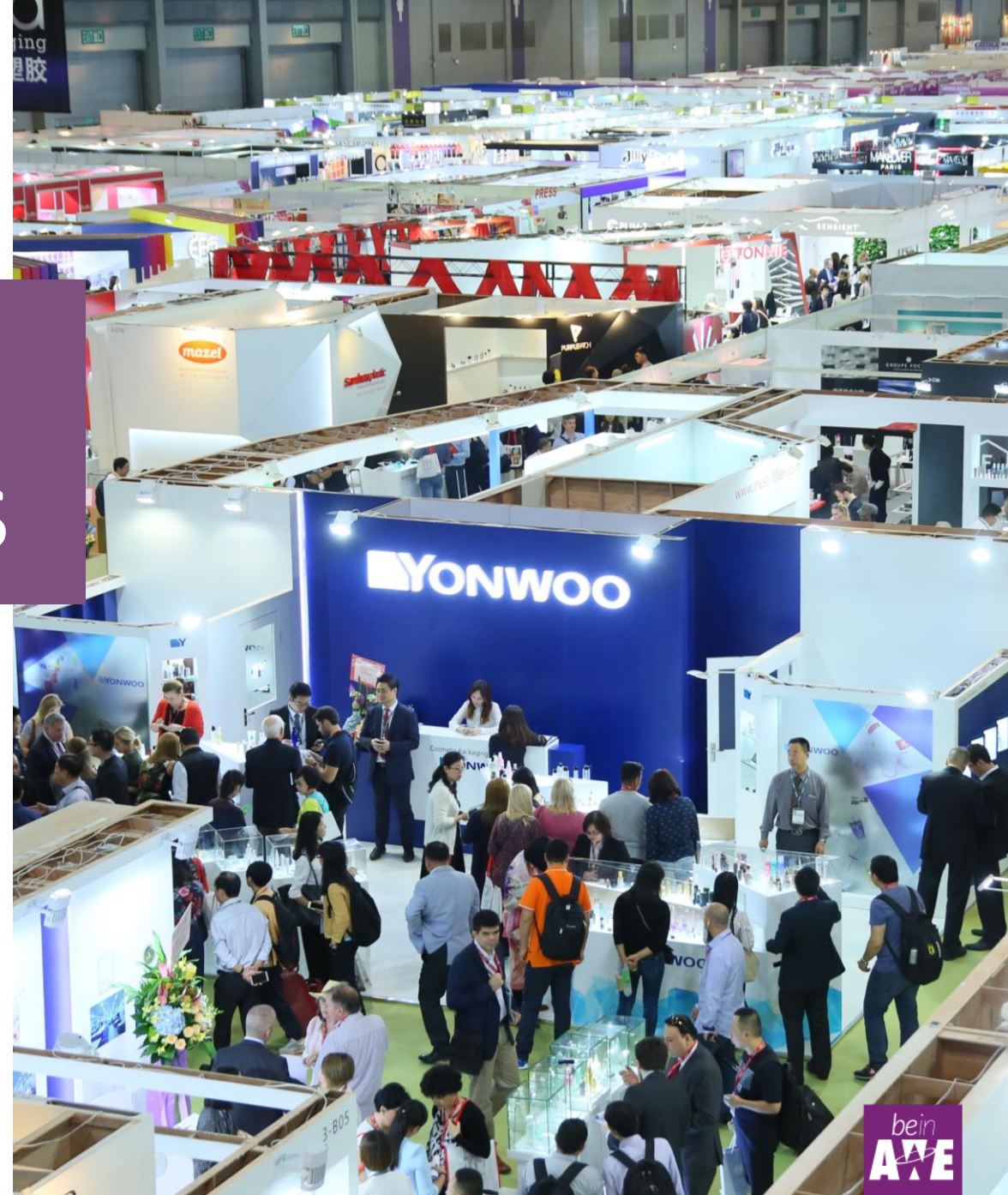
- Eligibility:  Exhibition area > 2,000 sqm

Up to **100%**
Rental Incentive,
cap of \$20m each

Recurrent International Exhibitions
>500pax or >50%
non-local participants (including exhibitors and buyers) 

Up to **50%**
Rental Incentive,
cap of \$20m each

Other Recurrent Exhibitions



A large, light gray, multi-pointed star graphic is positioned on the left side of the slide, partially overlapping the 'Thank You' text.

Thank You

A vertical decorative bar on the right side of the slide, composed of various colored squares in shades of purple, orange, and yellow.

✦
BE
IN
ASIA
WORLD-
EXPO! ✦